



sim standart[®]
INSULATION

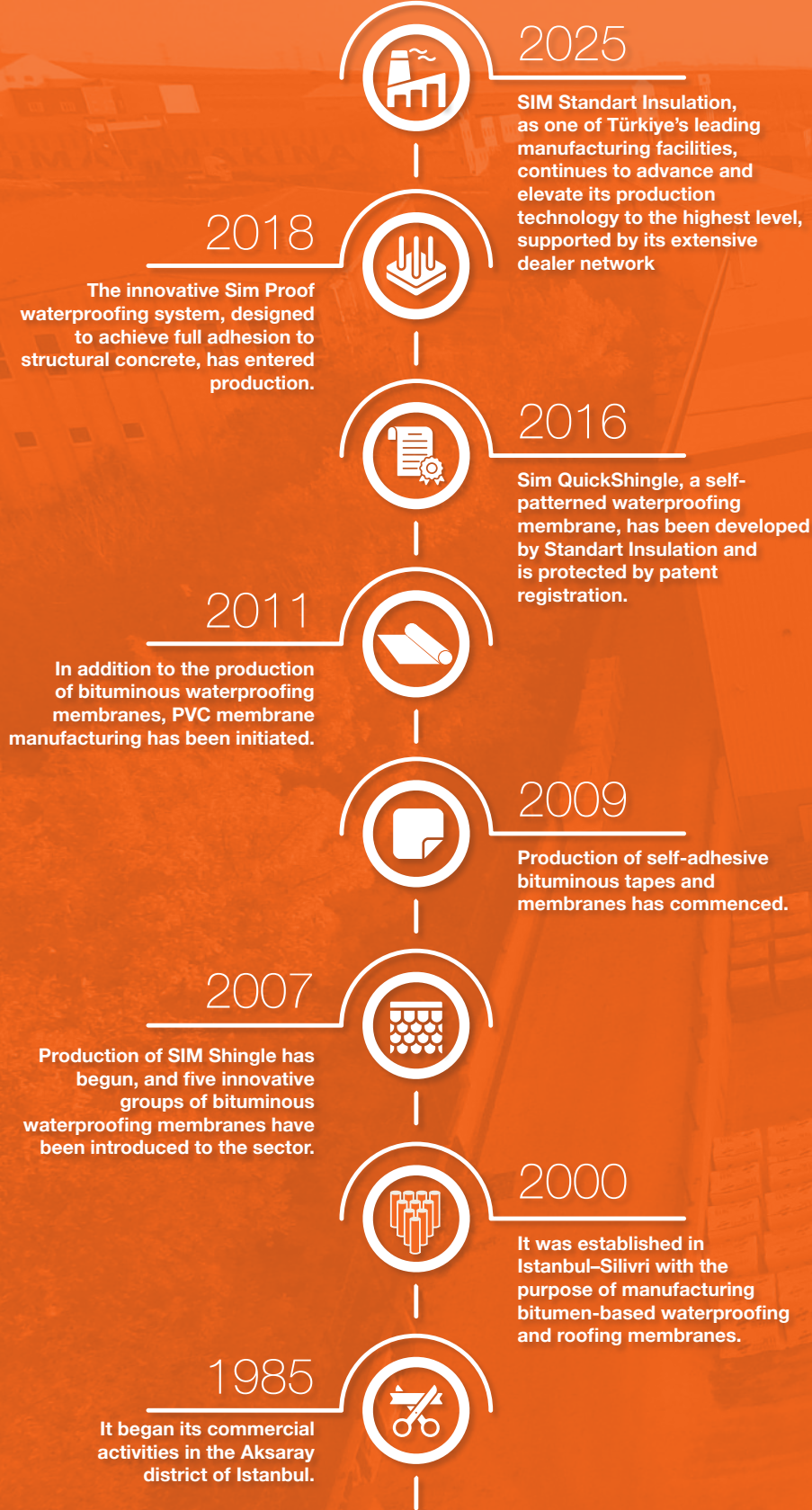


PRODUCT CATALOGUE
www.standartinsulation.com

2026[©]

Quality of Standart. Standard of the Quality

SIM standart INSULATION



Quality of Standart, Standard of the Quality

www.standartinsulation.com

CONTENTS



02

SIM PENGUEN
MEMBRANE SERIES



03

SIM PANDA
MEMBRANE SERIES



04

SIM FOK
MEMBRANE SERIES



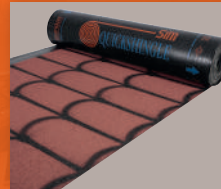
05

SIM GARDEN
SERIES



06

SIM PANDA VIA &
SIM POWER VIA



07

SIM QUICKSHINGLE
&
SIMSELF
QUICKSHINGLE



08

SIM SHINGLE



09

UNO SHINGLE &
PRINCO MEMBRANE



10

SIM
LIQUID PRODUCTS



11

SIMSELF TAPES



12

SIMSELF
MEMBRANE



13

SIM PROOF



14

SIM ELASTOBOND



15

SIMFLEX



16

COMPLEMENTARY
PRODUCTS



17

WOODEN
PRODUCTS

PENGUEN SERIES

-5°C COLD FLEXIBILITY

110°C HEAT RESISTANCE (AT LEAST)

In our Penguén Series bituminous membranes, Atactic Polypropylene (APP), a thermoplastic resin, is used to enhance the durability of the bitumen. To improve the mechanical strength of the membrane against tensile forces, either fiberglass or polyester reinforcement is used as the carrier layer. The Penguén Series bituminous membranes are also the most widely used membranes in Türkiye and the warm climate countries.



■ It adheres strongly to the applied surface and maintains excellent bonding performance even after installation. This feature is particularly advantageous in foundation and retaining wall waterproofing. It can be applied on various substrates such as wood or concrete.

■ With its transverse and longitudinal tensile strength values, it provides more than sufficient elasticity required during application. It withstands building movements and differences in thermal expansion.

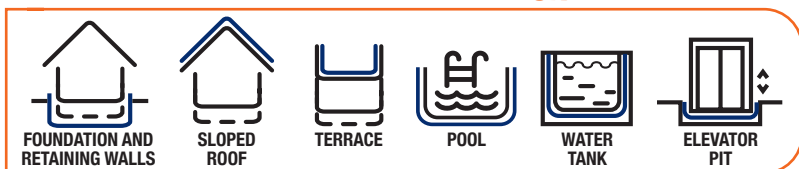
■ Our membranes do not melt or flow under high temperatures, nor do they crack or become brittle in cold conditions. They can be easily applied using a torch flame.

■ It adapts effectively to details such as expansion joints, concrete channels, parapet turn-ups, and chimney bases. When applied correctly and adequately protected, it ensures waterproofing for the lifetime of the building.

■ It can be used as an economical solution for below-grade exterior walls—such as soil-contacting walls, foundations, and ground-bearing slabs—where water may accumulate or create hydrostatic pressure, as well as in various waterproofing details.

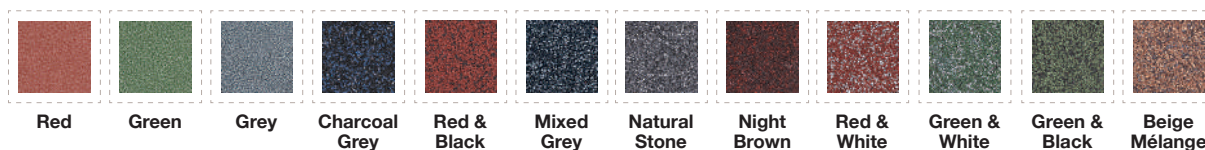
■ It is suitable for use (with protective covering) on flat, pitched, and vaulted roofs, as well as on the vertical and horizontal surfaces of terraces and balconies.

FIELDS OF APPLICATION



SIM PENGUEN MEMBRANE SERIES (-5)

FEATURES	SC 2000	SC 3000	SP 3000	SP 4000	SF 40 AR	SP 40 AR	SP 50 AR	SP 3000 AF
REINFORCEMENT	Fiberglass	Fiberglass	Polyester	Polyester	Fiberglass	Polyester	Polyester	Polyester
THICKNESS	2mm	3mm	3mm	4mm	3,2 - 3,5mm	3,2 - 3,5mm	4,2 - 4,5mm	3mm
MATERIAL DIMENSIONS	1m x 20m	1m x 10m	1m x 10m	1m x 10m	1m x 10m	1m x 10m	1m x 10m	1m x 10m
TENSILE STRENGTH (LENGTH/WIDTH) (N/50 MM)	300/200	300/200	600/400	600/400	300/200	600/400	600/400	600/400
COLD FLEXIBILITY	-5	-5	-5	-5	-5	-5	-5	-5
TOP COATING	PE Film	PE Film	PE Film	PE Film	Mineral	Mineral	Mineral	Aluminium
BACK COATING	PE Film	PE Film	PE Film	PE Film	PE Film	PE Film	PE Film	PE Film



Available in custom colors upon request.

YouTube Application Video
Scan the QR Code to Watch

-10°C COLD FLEXIBILITY

120°C HEAT RESISTANCE (AT LEAST)

PANDA SERIES

Panda Series waterproofing membranes are plastomeric waterproofing membranes designed as an ideal solution for continental climate zones with both hot and cold conditions. Atactic Polypropylene (APP) is incorporated to enhance the durability and long-term performance of the bitumen. Fiberglass or polyester reinforcement is used to improve the membranes' physical strength and mechanical resistance.

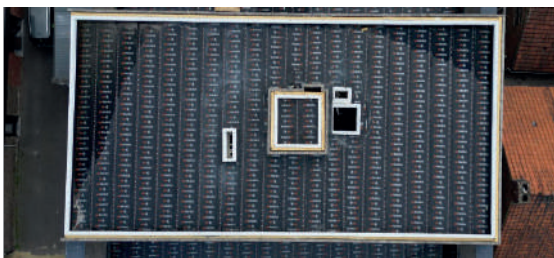
■ With its transverse and longitudinal tensile strength values, it provides more than sufficient elasticity required during application. It withstands building movements and differences in thermal expansion.

■ They are waterproofing membranes with wide application areas, distinguished by their proven performance across different climate conditions.

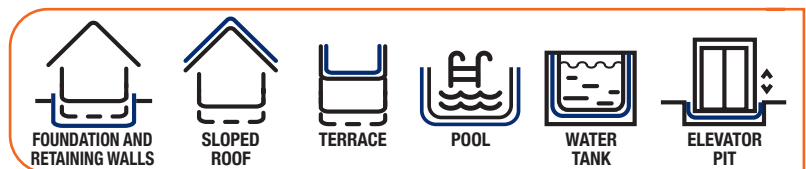
■ It adapts effectively to details such as expansion joints, concrete channels, parapet turn-ups, and chimney bases. When applied correctly and adequately protected, it ensures waterproofing for the lifetime of the building.

■ It adheres strongly to the applied surface, providing excellent adhesion. This property is maintained even after application is completed. Its superior adhesion performance is especially evident in foundation and retaining wall waterproofing applications.

■ Our membranes do not melt or flow under high temperatures, nor do they crack or become brittle in cold conditions. They can be easily applied using a torch flame.

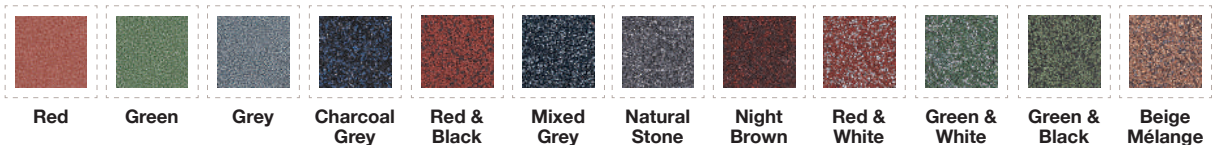


FIELDS OF APPLICATION



SIM PANDA MEMBRANE SERIES (-10)

FEATURES	SC 2000	SC 3000	SP 3000	SP 4000	SF 40 AR	SP 40 AR	SP 50 AR	SP 3000 AF
REINFORCEMENT	Fiberglass	Fiberglass	Polyester	Polyester	Fiberglass	Polyester	Polyester	Polyester
THICKNESS	2mm	3mm	3mm	4mm	3,2 - 3,5mm	3,2 - 3,5mm	4,2 - 4,5mm	3mm
MATERIAL DIMENSIONS	1m x 20m	1m x 10m	1m x 10m	1m x 10m	1m x 10m	1m x 10m	1m x 10m	1m x 10m
TENSILE STRENGTH (LENGTH/WIDTH) (N/50 MM)	400/300	400/300	800/600	800/600	400/300	800/600	800/600	800/600
COLD FLEXIBILITY	-10	-10	-10	-10	-10	-10	-10	-10
TOP COATING	PE Film	PE Film	PE Film	PE Film	Mineral	Mineral	Mineral	Aluminium
BACK COATING	PE Film	PE Film	PE Film	PE Film	PE Film	PE Film	PE Film	PE Film



YouTube Application Video
Scan the QR Code to Watch

Available in custom colors upon request.

SIM BITUMINOUS MEMBRANES

FOK SERIES -20°C COLD FLEXIBILITY 100°C HEAT RESISTANCE (AT LEAST)

Fok Series bituminous membranes incorporate Styrene-Butadiene-Styrene (SBS), a thermoplastic elastomer, to enhance the durability of the bitumen. To increase the membrane's mechanical resistance to stresses, fiberglass or polyester reinforcement is used.



■ In cold climate conditions where temperatures fall below the freezing point, Fok Series membranes maintain their flexibility without any loss of performance. With their high transverse and longitudinal tensile strength values, they provide more than sufficient elasticity to withstand high stresses and structural movements during application and service life.

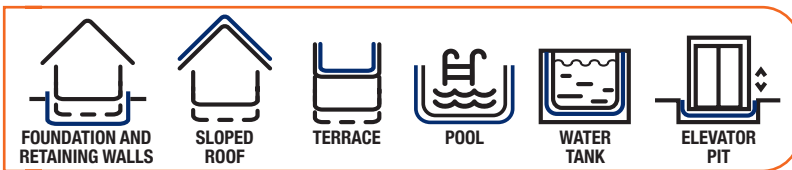
■ It adheres strongly to the applied surface, providing excellent adhesion. This property is maintained even after application is completed.

■ It is resistant to structural movements and differential expansion. Thanks to its high flexibility, it is particularly preferred for metal roofs where expansion and bending tendencies are significant.

■ Our membranes do not exhibit melting or flowing under high-temperature conditions, nor cracking or breaking under cold-weather conditions. They can be easily applied using a blowtorch flame and can be cut to the desired dimensions and shapes with special cutting knives.

■ It adapts effectively to details such as expansion joints, concrete channels, parapet turn-ups, and chimney bases.

FIELDS OF APPLICATION



SIM FOK MEMBRANE SERIES (-20)

FEATURES	SC 2000	SC 3000	SP 3000	SP 4000	SF 40 AR	SP 40 AR	SP 50 AR
REINFORCEMENT	Fiberglass	Fiberglass	Polyester	Polyester	Fiberglass	Polyester	Polyester
THICKNESS	2mm	3mm	3mm	4mm	3,2 - 3,5mm	3,2 - 3,5mm	4,2 - 4,5mm
MATERIAL DIMENSIONS	1m x 20m	1m x 10m	1m x 10m	1m x 10m	1m x 10m	1m x 10m	1m x 10m
TENSILE STRENGTH (LENGTH/WIDTH) (N/50 MM)	400/300	400/300	800/600	800/600	400/300	800/600	800/600
COLD FLEXIBILITY	-20	-20	-20	-20	-20	-20	-20
TOP COATING	PE Film	PE Film	PE Film	PE Film	Mineral	Mineral	Mineral
BACK COATING	PE Film	PE Film	PE Film	PE Film	PE Film	PE Film	PE Film



Available in custom colors upon request.

YouTube Application Video
Scan the QR Code to Watch

PANDA GARDEN -10°C 120°C -20°C 100°C FOK GARDEN

Sim Garden Membrane is a high-performance bituminous waterproofing membrane produced in two different types based on APP (Atactic Polypropylene) and SBS (Styrene-Butadiene-Styrene) modified bitumen. It is reinforced with a high-strength polyester reinforcement to enhance mechanical resistance, coated with polyethylene film on both surfaces, and specially developed to provide resistance against plant root penetration.

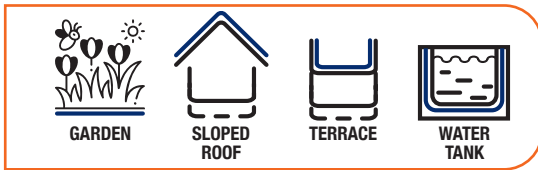
FIELDS OF APPLICATION

It provides reliable waterproofing for garden, terrace, and balcony applications, particularly on surfaces in contact with soil. In garden-over-parking systems, it offers long-lasting protection thanks to its resistance to plant root penetration. It ensures effective insulation against water and root intrusion for foundations, walls, and ground-supported slabs that are in direct contact with soil.

For external walls where water accumulation or hydrostatic pressure may occur, it serves as a safe and cost-effective waterproofing solution. Sim Garden Membrane, with its special formulation, prevents plant roots from damaging the waterproofing layer, while the integrated polyethylene film layer provides an additional protective barrier against more aggressive root systems.



FIELDS OF APPLICATION



SIM GARDEN MEMBRANE SERIES

FEATURES	UNIT	PANDA SP 3000	PANDA SP 4000	FOK SP 3000	FOK SP 4000
REINFORCEMENT		Polyester	Polyester	Polyester	Polyester
THICKNESS	mm(±0,2)	3	4	3	4
MATERIAL DIMENSIONS	m	1m x 10m	1m x 10m	1m x 10m	1m x 10m
ELONGATION AT BREAK (LENGTH/WIDTH)	%	35/35	35/35	35/35	35/35
TENSILE STRENGTH (LENGTH/WIDTH)	N/50mm	800/600	800/600	800/600	800/600
COLD FLEXIBILITY	°C	-10	-10	-20	-20
STATIC LOAD RESISTANCE	kg	≥15	≥15	≥15	≥15
IMPACT RESISTANCE	mm	≥1750	≥1750	≥1750	≥1750
FIRE REACTION	Class	E	E	E	E
TOP COATING		PE	PE	PE	PE
BACK COATING		PE	PE	PE	PE



YouTube Application Video
Scan the QR Code to Watch

SIM PANDA VIA

-10°C COLD FLEXIBILITY

120°C HEAT RESISTANCE (AT LEAST)

They are APP (Atactic Polypropylene)-modified bituminous waterproofing membranes suitable for use in hot, temperate, and continental (moderately cold) climate zones. They can be manufactured with polyethylene film on both surfaces, or with polyethylene film on one side and fine sand coating on the other. A high-strength polyester felt is used as the reinforcing carrier layer.



SIM POWER VIA

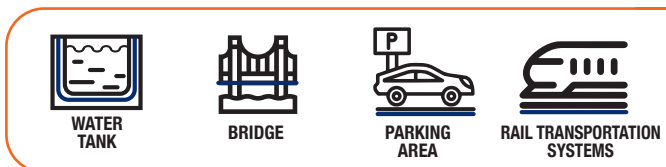
-20°C COLD FLEXIBILITY

100°C HEAT RESISTANCE (AT LEAST)

Sim Power Via membranes are SBS (Styrene-Butadiene-Styrene)-modified bituminous waterproofing membranes specifically developed for structures exposed to very high stress levels. While belonging to the elastomeric series, they also provide high temperature resistance. Thanks to the dual reinforcing carrier layers integrated into their structure, they deliver superior performance against stress and offer a long-lasting waterproofing solution.



FIELDS OF APPLICATION



FEATURES	UNIT	SIM PANDA VIA		SIM POWER VIA	
		SP 4000	SP 4000 THIN SAND	SPC 4000	SPP 4000
REINFORCEMENT		Polyester	Polyester	Polyester + Fiberglass	Polyester + Polyester
THICKNESS	mm(±0,2)	4	4	4	4
MATERIAL DIMENSIONS	m	1m x 10m	1m x 10m	1m x 10m	1m x 10m
JOINT SHEAR RESISTANCE	N/50mm	≥500	≥500	≥550	≥600
TENSILE STRENGTH (LENGTH/WIDTH)	N/50mm	1000/800	1000/800	1200/1100	1700/1500
ELONGATION AT BREAK (LENGTH/WIDTH)	%	40/40	40/40	40/40	40/40
TEAR RESISTANCE (LENGTH/WIDTH)	N	≥200/ ≥200	≥200/ ≥200	≥300/ ≥250	≥300/ ≥300
STATIC LOAD RESISTANCE	kg	≥15	≥15	≥20	≥20
IMPACT RESISTANCE	mm	≥1250	≥1250	≥2000	≥2000
FIRE REACTION	Class	E	E	E	E
TOP COATING		PE	THIN SAND	PE	PE
BACK COATING		PE	PE	PE	PE



YouTube Application Video
Scan the QR Code to Watch

SIM QUICKSHINGLE[®]

Our patented product, SIM Quickshingle, is a roofing material developed by Standart İzolasyon Inc. offering aesthetic and practical solutions with its patterned surface design. Manufactured on a polymer-modified bitumen basis, SIM Quickshingle features a top surface coated with colored natural mineral granules, while the underside is covered with a polyethylene film. A polyester felt reinforcement is used to provide high resistance against stresses. Thanks to this special structure, it maintains the high performance demonstrated during application throughout its long-term service life.

TRANSPORTATION AND STORAGE

Products should be stored in a vertical position in covered and protected areas. Pallets must not be stacked and should be stored in a single layer only. The products should be kept protected from direct sunlight and sudden temperature changes.

FIELDS OF APPLICATION

- On wooden, reinforced concrete, and similar roof structures,
- On non-trafficable terrace and garden roofs,
- On bungalow and Tiny House roofs,
- It can be safely used as the final layer on pergolas, garden sheds, gazebos, and canopies.

WHY SHOULD YOU CHOOSE SIM QUICKSHINGLE?

- Provides an economical and practical solution.
- It offers practical application.
- Maintains its vibrant appearance over time thanks to its UV-resistant structure, preventing color fading.
- The product is heat-bonded without the use of nails, ensuring excellent waterproofing and insulation.
- Suitable for four-season use and can be safely applied under all weather conditions.
- Its lightweight structure minimizes the load on the roof compared to alternative materials.

-5°C COLD FLEXIBILITY **110°C** HEAT RESISTANCE (AT LEAST)



YouTube Application Video
Scan the QR Code to Watch

SIMSELF QUICKSHINGLE[®]

Our patented product SIMSelf Quickshingle is a bituminous roofing material manufactured on a polymer-bitumen basis, featuring a top surface coated with colored natural mineral granules and a bottom surface protected with a removable release film. Its self-adhesive structure enables fast and easy installation. To provide high resistance against tensile stresses, it is reinforced with a polyester felt carrier. The specially designed 3D patterned surface offers significant ease during application. All models deliver a continuous and aesthetic appearance thanks to their complementary pattern structure.



TECHNICAL FEATURES

PROPERTIES	UNIT	VALUE
LENGTH	m	10
WIDTH	m	1
THICKNESS	mm	3,5
WATERPROOFNESS	kPa	Passed
COLD FLEXIBILITY	°C	-5
TENSILE STRENGTH (TRANSVERSE)	N/50mm	400
TENSILE STRENGTH (LONGITUDINAL)	N/50mm	600
ELONGATION AT BREAK (TRANSVERSE)	%	30
ELONGATION AT BREAK (LONGITUDINAL)	%	30
HEAT RESISTANCE	°C	110
FIRE REACTION	-	E
HAZARDOUS SUBSTANCES	-	None
FIRE REACTION		Broof

SIM SHINGLE

-5°C COLD FLEXIBILITY

110°C HEAT RESISTANCE (AT LEAST)

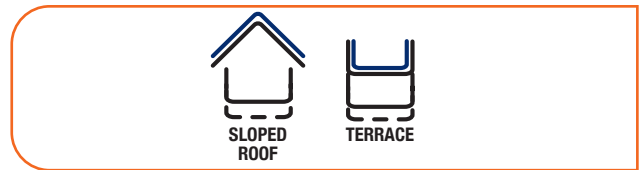
Sim Shingle (self-adhesive, non-cracking shingle) is a bitumen-based aesthetic roofing material, with one surface coated with colored mineral granules and the other surface covered with a removable polyethylene film, manufactured with a self-adhesive layer. In this product, Atactic Polypropylene (APP) is used to enhance the durability of the bitumen, and fiberglass reinforcement is incorporated into the bituminous membrane to improve its mechanical resistance against stresses. Sim Shingle is manufactured in different colors and surface patterns, including Classic (Rounded), Hexagonal (Honeycomb), Effect (3D), and Rectangular (Square) options.



FEATURES

- It is resistant to harsh weather conditions and wind loads.
- It does not lift from the applied surface and provides long-term adhesion.
- It is not affected by UV (ultraviolet) radiation and maintains its color and structural stability.
- High elasticity ensures resistance to cracking.
- It maintains its form and durability against temperature differences.
- The mineral coated top surface provides a long-lasting aesthetic appearance.
- The lightweight structure ensures easy transportation and minimizes additional structural load.
- It can be applied quickly and practically using a torch flame.
- Additional accessories are not required when applied with appropriate detail solutions.

FIELDS OF APPLICATION



SIM SHINGLE					
PROPERTIES	UNIT	SHINGLE CLASSIC	SHINGLE HEXAGONAL	SHINGLE SQUARE	SHINGLE EFFECT
REINFORCEMENT		Fiberglass	Fiberglass	Fiberglass	Fiberglass
WIDTH	mm	320	320	320	320
LENGTH	mm	1000	1000	1000	1000
TENSILE STRENGTH (LENGTH/WIDTH)	N/50mm	600/400	600/400	600/400	600/400
NET COVERAGE AREA (PER PACKAGE)	m ²	2,56	2,52	2,52	2,52
PACKAGING TYPE	POLYETHYLENE WRAPPED PACKAGES				
BITUMEN MASS	gr/m ²	≥1300	≥1300	≥1300	≥1300



Available in custom colors upon request.

YouTube Application Video
Scan the QR Code to Watch

-5°C COLD FLEXIBILITY

110°C HEAT RESISTANCE (AT LEAST)

UNO SHINGLE

UNO Shingle is an economical series of bitumen-based roofing materials that is widely preferred on sloped roofs, standing out with its aesthetic appearance and durability. Atactic Polypropylene (APP) is used to increase the resistance of the bitumen against weather conditions, and it is reinforced with fiberglass to enhance its resistance against tensile stresses. For the product to demonstrate long-term performance, the minimum recommended roof slope is 20%.



PROPERTIES	UNIT	SHINGLE CLASSIC	SHINGLE HEXAGON
REINFORCEMENT		Fiberglass	Fiberglass
WIDTH	mm	320	320
LENGTH	mm	1000	1000
REINFORCEMENT	N/50mm	400	400
TENSILE STRENGTH (LENGTH)	N/50mm	200	200
TENSILE STRENGTH (WIDTH)	m ²	2.56	2.52
PACKAGING TYPE		POLYETHYLENE WRAPPED PACKAGES	

-10°C COLD FLEXIBILITY

110°C HEAT RESISTANCE (AT LEAST)

PRINCO MEMBRANE

Princo Membrane is an economical series product modified with Atactic Polypropylene (APP) and reinforced with either fiberglass mat or polyester felt as the carrier layer. It strongly adheres to the applied surface and maintains its adhesion performance after application. The membrane is suitable for foundations in contact with soil, exterior walls, and ground-supported slabs where water pressure may occur. It is also widely used on balconies, terraces, and sloped roofs, as well as in wet areas such as bathrooms, kitchens, and washbasins. When applied using appropriate methods and provided with adequate protection, it maintains its waterproofing performance throughout the lifetime of the building.



PRINCO MEMBRANE SERIES

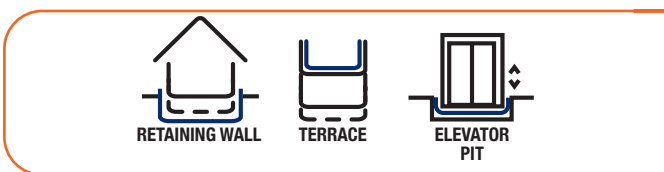
FEATURES	UNIT	PRINCO P 30	PRINCO P 40	PRINCO PAR 35
REINFORCEMENT		Polyester	Polyester	Polyester
THICKNESS	mm(±0,5)	2	3	2,5
MATERIAL DIMENSIONS	m	1m x 10m	1m x 10m	1m x 10m
TENSILE STRENGTH (LENGTH/WIDTH)	N/50mm	400/250	400/250	400/250
ELONGATION AT BREAK (LENGTH / WIDTH)	%	25/25	25/25	25/25
HEAT RESISTANCE	°C	110	110	110
COLD FLEXIBILITY	°C	-10	-10	-10

SIM LIQUID PRODUCTS



YouTube Application Video
Scan the QR Code to Watch

FIELDS OF APPLICATION



SIM PRIMER

Sim Primer is a ready-to-use bitumen-based primer obtained by mixing water and bitumen using special methods. Sim Primer is used as a primer layer before the application of standard bituminous membranes. Its strong adhesion property ensures that the bituminous membranes applied on top bond more firmly and without voids to the surface, thereby enhancing waterproofing performance.

Consumption

400gr/m²
Packaging: 17 kg/bucket



SIM POLAS

Sim Polas is a bitumen-based, rubber-modified, single-component, water-based, elastic liquid waterproofing material. It can be applied directly without any mixing or preparation. Before application, it is brown in color and turns black after drying.

Consumption

Vertical application:
1.5kg/m²
Horizontal application
0.800kg/m²
Packaging 17 kg/bucket



SIMEX 2K

SimEx 2K is a reinforced, polymer-modified, bitumen-based, two-component, water-based, elastic liquid waterproofing material. It has a high crack-bridging capacity. It provides reliable waterproofing over a wide range of applications, from foundations to wet areas.

Consumption

For 1mm thickness:
1.1kg/m²
Packaging 22 kg
liquid + 8 kg powder

-20°C COLD FLEXIBILITY

100°C HEAT RESISTANCE (AT LEAST)

SIMSELF TAPES

SimSelf tapes are produced in two different surface options. SimSelf tapes are bitumen-based waterproofing tapes modified with Styrene-Butadiene-Styrene (SBS). SimSelf Aluminium Foil Coated Tapes feature an aluminum foil-coated upper surface, while the lower surface is protected with a removable release film.

SimSelf Mineral Coated Tape has one surface coated with colored mineral, while the other surface is protected with a removable release film. Their self-adhesive structure allows fast and efficient application.

FIELDS OF APPLICATION

SimSelf tapes are not affected by sunlight and have high UV resistance thanks to their plain aluminum foil, embossed foil, or natural mineral-coated surfaces. Its flexible structure allows easy application on sloped and curved surfaces. The removable film layer on the bottom surface allows the tape to become ready for adhesion once it is removed before application. However, for effective adhesion, the application surface must be clean and dry. On concrete surfaces, SimSelf Bitumen Primer must be applied before the tape installation. After the primer is applied, it should be allowed to fully dry, and then the SimSelf tape should be carefully bonded to the surface.

SIMSELF BUTYL TAPE

SimSelf Butyl Tape is a special butyl rubber-based tape that provides high adhesion strength due to its self-adhesive structure and durable geotextile coating. Offering superior performance in water and air sealing, this tape can be safely used in terraces, balconies, roofs, facades, and wet areas.



SIMSELF BITUMEN PRIMER

SimSelf Bitumen Primer is an elastomeric modified bitumen-based primer designed to prepare surfaces before the application of self-adhesive bituminous membranes and tapes.

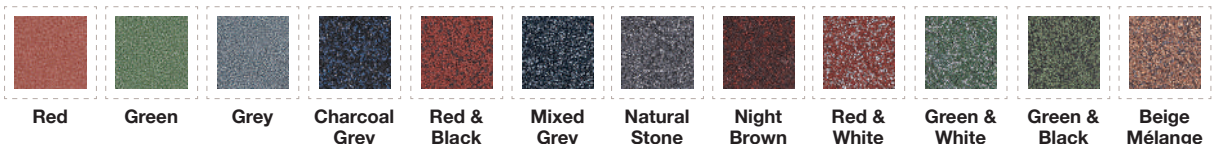


SIMSELF TAPES

PROPERTIES	SIMSELF ALUM. FOIL COATED	SIMSELF TAPE MINERAL COATED	SIMSELF BUTYL TAPE
REINFORCEMENT	Alum. Foil	Polyester	Geotextile
THICKNESS	1,5mm	2,5mm	1,4mm
WIDTH	10-15-20-30-60-100cm	10-15-20-30-60-100cm	10-15-20-30-60-100cm
LENGTH	10m	10m	10m
TOP COATING	Alum. Foil	Mineral	Geotextile
BACK COATING	Removable film	Removable film	Removable film
PACKAGE CONTENTS	6m ²	6m ²	6m ²



YouTube Application Video
Scan the QR Code to Watch



Available in custom colors upon request.

SIMSELF MEMBRANE (SELF-ADHESIVE)

SIMSELF MEMBRANE (One side or Double Sided Self-Adhesive)

SimSelf Membranes are polyester felt, self-adhesive bituminous waterproofing membranes. They are manufactured with a polyethylene film or mineral coating on the top surface, and a removable film on the back surface. It offers practical and reliable solutions for a wide range of applications, from roofs to foundations, with its high waterproofing performance, flexibility that accommodates structural movements, and self-adhesive structure.

Its easy applicability on sloped and curved surfaces increases application speed and labor efficiency. SimSelf Mineral Coated Membrane is resistant to UV radiation due to its mineral-coated upper surface and is used as a final layer material.

FIELDS OF APPLICATION

SimSelf Membranes strongly adhere to a wide range of substrates, including wood, plastic, glass, plaster, and concrete, through their self-adhesive lower surface. With this feature, they can be safely used in structural details such as walls, parapets, chimney bases, eaves, coping caps, and gable walls, in the insulation of cracks formed on cladding boards, in deck coverings of boats, and in special applications such as the automotive sector.

In areas where the use of open flames or torch application is not possible or is unsafe, it provides a significant advantage thanks to its ability to be applied without the need for heat. It can also be easily applied on wood, plastic, or thermal insulation boards with low heat resistance (XPS, EPS, etc.). In addition, thanks to its ability to adapt to sloped and curved surfaces, it takes the form of the applied surface and offers fast solutions in detailed areas.



110°C HEAT RESISTANCE (AT LEAST)



YouTube Application Video
Scan the QR Code to Watch

TECHNICAL PROPERTIES

FEATURES	UNIT	SP 1500	SP 2000	SP 2500	SP 3000	SP 40 AR
REINFORCEMENT		Polyester	Polyester	Polyester	Polyester	Polyester
THICKNESS	mm(±0,2)	1,5	2	2,5	3	3,5
MATERIAL DIMENSIONS	m	1m x 20m	1m x 20m	1m x 10m	1m x 10m	1m x 10m
TENSILE STRENGTH (LENGTH / WIDTH)	N/50mm	400/300	400/300	600/400	600/400	600/400
ELONGATION AT BREAK (LENGTH / WIDTH)	%	30/30	30/30	30/30	30/30	30/30
TEAR RESISTANCE (LENGTH / WIDTH)	N	≥100/ ≥100	≥100/ ≥100	≥150/ ≥150	≥150/ ≥150	≥150/ ≥150
STATIC LOAD RESISTANCE	kg	≥5	≥5	≥10	≥10	≥15
IMPACT RESISTANCE	mm	≥1000	≥1250	≥1500	≥1500	≥1500
FIRE REACTION	Class	E	E	E	E	E
TOP COATING		Polyethylene Film / Removable Film	Polyethylene Film / Removable Film	Polyethylene Film / Removable Film	Polyethylene Film / Removable Film	Mineral
BACK COATING		Removable Film	Removable Film	Removable Film	Removable Film	Removable Film

-20°C COLD FLEXIBILITY

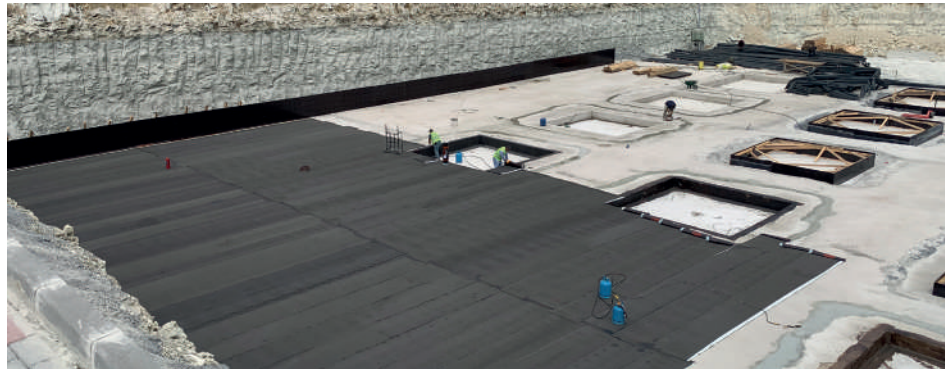
100°C HEAT RESISTANCE (AT LEAST)

SIM PROOF

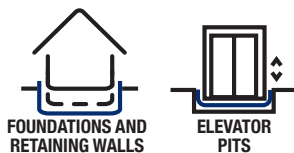
Sim Proof Membrane is a professional waterproofing membrane developed with modified bitumen technology, based on Styrene Butadiene Styrene (SBS) and reinforced with polyester felt, which is capable of providing complete and permanent adhesion to concrete during the hydration process of freshly poured concrete, and is manufactured in thicknesses of 3 mm, 3.5 mm, 4 mm, and 4.5 mm.

FIELDS OF APPLICATION

- The Sim Proof Membrane system provides a professional waterproofing solution for deep foundations and single-sided applications.
- It ensures full adhesion to reinforced concrete structural elements, effectively preventing potential lateral water migration.
- In cases of ground settlement, the waterproofing membrane does not separate from the reinforced concrete foundation.
- It does not require a protective concrete layer; therefore, it provides savings in both cost and time.
- The Sim Proof Membrane system is also an ideal solution for inclined surfaces where protective concrete cannot be applied.
- It is specially designed for foundations and blind formwork retaining walls of structures that remain below ground level.



FIELDS OF APPLICATION



TECHNICAL PROPERTIES

FEATURES	UNIT	V 3 mm	H 3.5 mm	H 4 mm	H 4,5 mm
REINFORCEMENT		Polyester	Polyester	Polyester	Polyester
THICKNESS	mm(±0,2)	3	3,5	4	4,5
MATERIAL DIMENSIONS	m	1m x 10m	1m x 10m	1m x 10m	1m x 8m
TENSILE STRENGTH (LENGTH / WIDTH)	N/50mm	600/400	800/600	800/600	1000/800
ELONGATION AT BREAK (LENGTH / WIDTH)	%	30/30	35/35	35/35	35/35
TEAR RESISTANCE (LENGTH / WIDTH)	N	≥200/ ≥200	≥200/ ≥200	≥200/ ≥200	≥200/ ≥200
STATIC LOAD RESISTANCE	kg	≥15	≥15	≥15	≥15
IMPACT RESISTANCE	mm	≥1250	≥1500	≥1500	≥1750
FIRE REACTION	Class	E	E	E	E
TOP COATING		Special Thin Mineral	Special Thin Mineral	Special Thin Mineral	Special Thin Mineral
BACK COATING		Removable Film	PE	PE	PE



YouTube Application Video
Scan the QR Code to Watch

SIM ELASTO BOND -20°C COLD FLEXIBILITY 110°C HEAT RESISTANCE (AT LEAST)

Sim Elasto Bond is a high-performance waterproofing membrane produced with 4.4 mm thickness with special fine sand coating and 5 mm thickness with mineral coating options, having a polyethylene film-coated upper surface and a polyester felt reinforcement. Styrene-Butadiene-Styrene (SBS) and Thermoplastic Polyurethane (TPU)-modified polymer bitumen delivers superior flexibility and high adhesion strength for reliable bituminous waterproofing.



High-performance membranes produced with mineral coated and special thin mineral surface options are designed as single-layer waterproofing materials for terraces and sloped roofs. With its long-lasting and durable structure, it provides superior adhesion and waterproofing thanks to the SBS and TPU polymers in its composition.

It can be safely used throughout all four seasons and delivers high performance under all weather conditions. Its flexible structure, which adapts to all climate conditions, prevents cracking at very low temperatures and maintains its durability without deformation at high temperatures. With the ability to be applied directly over existing membrane layers, it offers a fast and practical solution for roof and terrace renovation applications.



YouTube Application Video
Scan the QR Code to Watch

FIELDS OF APPLICATION



RETAINING WALLS



TERRACES



TECHNICAL PROPERTIES			
FEATURES	UNIT	4,4mm	5mm
REINFORCEMENT		Polyester	Polyester
THICKNESS	mm(±0,2)	4,4	5
MATERIAL DIMENSIONS	m	1m x 8m	1m x 8m
HEAT RESISTANCE	°C	>110	>110
COLD FLEXIBILITY	°C	-20	-20
TENSILE STRENGTH (LENGTH / WIDTH)	N/50mm	800/600	1000/800
ELONGATION AT BREAK (LENGTH / WIDTH)	%	40/35	40/40
STATIC LOAD RESISTANCE	kg	≥15	≥15
IMPACT RESISTANCE	mm	≥1000	≥1000
FIRE REACTION	Class	E	E
TOP COATING		Special Thin Mineral	Mineral
BACK COATING		PE	PE

-25°C COLD FLEXIBILITY

100°C HEAT RESISTANCE (AT LEAST)

SIM FLEX

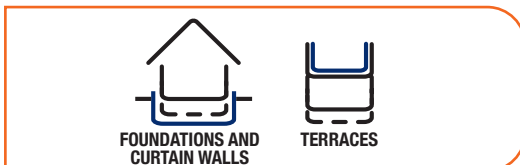
Sim Flex is an elastomeric bituminous waterproofing membrane manufactured using SBS modified bitumen. Its upper surface is coated with special fine sand granules, while the lower surface is covered with a polyethylene film, and it is reinforced with a polyester felt carrier. With a bitumen elongation rate of 1800% and a cold flexibility value of -25°C, it offers superior flexibility and durability.

It is suitable for use on walls in contact with soil, curtain walls, and expansion joint details. It can be easily applied on various surfaces such as wood, reinforced concrete, and metal. In addition, it can be used as an economical and aesthetic solution for waterproofing details, particularly on vertical and horizontal surfaces of terraces.

FEATURES

- 1800% Bitumen Elongation
- Single-layer application with 5 mm thickness
- -25°C Cold Flexibility
- Superior Elasticity
- Self-healing property
- Suitable for all details
- Extra resistance against impacts, tearing, and punctures
- More economical

FIELDS OF APPLICATION

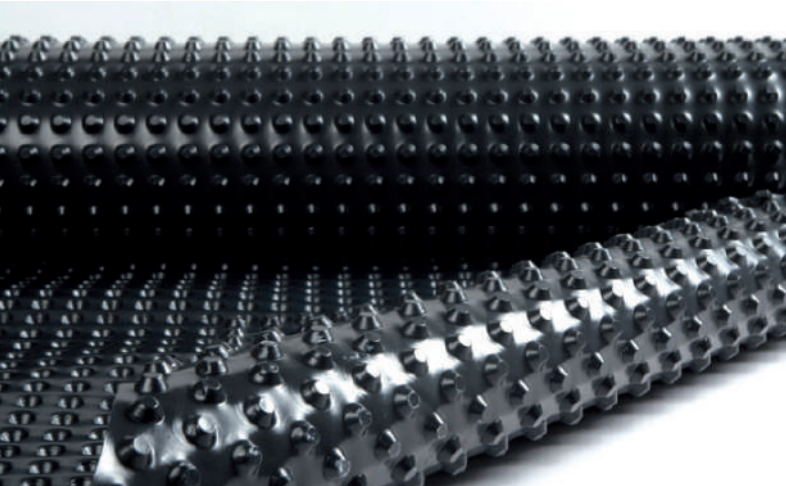


TECHNICAL PROPERTIES

FEATURES	UNIT	SIM FLEX
REINFORCEMENT		Polyester
THICKNESS	mm(±0,2)	5
MATERIAL DIMENSIONS	m	1m x 8m
HEAT RESISTANCE	°C	>100
COLD FLEXIBILITY	°C	-25
TENSILE STRENGTH (LENGTH / WIDTH)	N/50mm	900/650
ELONGATION AT BREAK (LENGTH / WIDTH)	%	45/45
TEAR RESISTANCE (LENGTH / WIDTH)	N	≥270/≥270
SBS-MODIFIED BITUMEN ELONGATION		%1800
STATIC LOAD RESISTANCE	kg	≥20
IMPACT RESISTANCE	mm	≥1000
FIRE REACTION	Class	E
TOP COATING		Special Thin Mineral
BACK COATING		PE

COMPLEMENTARY PRODUCTS

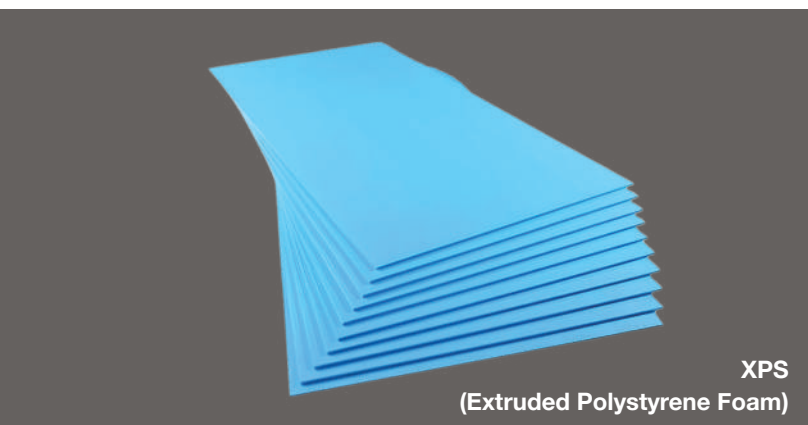
DRAINAGE BOARD



Drainage Board is a specialized waterproofing material designed to ensure the controlled removal of water and prevent water accumulation in parts of buildings that are in contact with soil, such as foundations, terraces, and basements.

Typically manufactured from polypropylene or polyethylene raw materials, these boards reduce soil pressure and facilitate the discharge of water away from the structure through their specially designed protrusions and channels on the surface. This extends the service life of the building's waterproofing system. In addition, the drainage board reduces structural stresses, thereby lowering the risk of cracking in foundations and walls.

XPS



XPS Insulation Board is a high-performance thermal insulation material used in foundations, floors, terraces, and other building components in contact with soil. Manufactured by the extrusion process, XPS features a closed-cell structure that provides excellent thermal insulation, high compressive strength, and minimal water absorption.

These properties ensure long-term durability, maintain dimensional stability under load, and contribute to improved energy efficiency and indoor comfort in buildings.

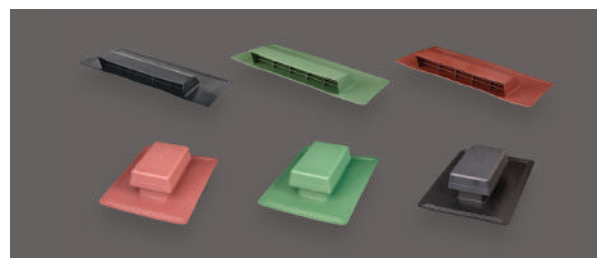
GEOTEXTILE FELTS



Geotextile felt is a specialized textile material used in construction and infrastructure projects, typically manufactured from polypropylene or polyester fibers and produced in either nonwoven or woven form. Thanks to its high puncture resistance, it protects materials against impacts and allows for differential movements.

The load distribution capability makes it suitable for protecting waterproofing applications in building foundations. It is widely applied in building foundations, retaining walls, terrace areas, roofs, metro tunnels, and highway tunnels.

COMPLEMENTARY PRODUCTS



Sloped Roof (Shingle) Vent Pipe
Flat Model (Black – Red – Green)
Capped Model (Black – Red – Green)



Sim Shingle Nail

OSB WOODEN BOARD

Oriented Strand Board (OSB) is a wood-based material resistant to moisture and impact. Its flexible structure and decorative appearance make it widely preferred for roof and wall cladding applications.



OSB 2

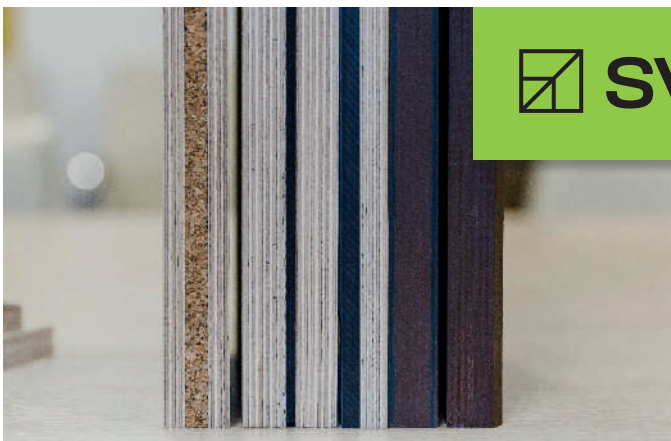
OSB 2 boards are high-strength wood panels designed for use in dry environments. They are widely preferred in interior construction, particularly for wall and floor panels as well as load-bearing structural applications. In addition, they are used as supporting structures in upholstered furniture manufacturing, as decorative materials, in shelf production, and in packaging for transportation purposes, excluding liquid transport.

OSB 3

OSB 3 offers high moisture resistance and features a lighter and brighter appearance compared to other OSB types. It is particularly preferred in roof constructions, applications requiring decorative surfaces, and building projects aimed at enhancing quality standards.

PLYWOOD

Russian Birch film-faced plywood is manufactured in accordance with high-quality standards and holds a leading position in the global market. SVEZA is the world's largest producer of Russian birch plywood.



NON-FILM FACED PLYWOOD (SVEZA)

When thin layers of birch wood are evenly arranged on each surface during plywood production and combined with high-quality adhesives and advanced manufacturing methods, the result is a high-quality material produced in accordance with international standards.

FILM-FACED PLYWOOD (SVEZA)

Birch plywood is a flat and abrasion-resistant birch panel coated with phenolic film. It is widely preferred in concrete formwork applications, offering long service life with 70 or more reuse cycles. Its high strength and smooth surface make it suitable for curtain wall and slab concrete casting. It is also suitable for well and foundation works. Both surfaces are coated with 120 g/m² phenolic film to enhance durability.

sim standart[®]
INSULATION



WEBSITE



YOUTUBE



INSTAGRAM



FACEBOOK
MASTER'S CLUB

📍 Fevzipaşa Mah. Kınalı Kavşağı Cad. No:123 ve 123/1 Silivri / İstanbul

☎ +90 (212) 670 49 51

✉ export@standartinsulation.com 🏠 www.standartinsulation.com